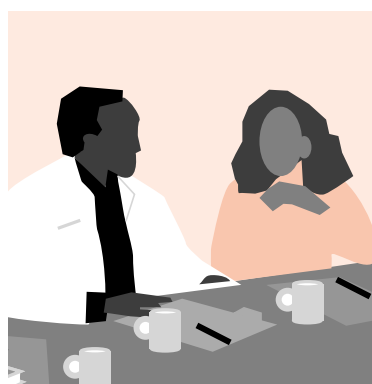


GRADUATE MEDICAL EDUCATION IN HISTORICALLY BLACK COLLEGES AND UNIVERSITIES

MCH Training Program

PROGRAM HISTORY AND STRATEGY

Despite strides that have been made during the past few decades, minorities—in particular African Americans—continue to have a poorer health status than the general population. Because minority physicians often provide care for minority populations, the Maternal and Child Health Bureau



(MCHB) made it a priority to increase the number of minority physicians being trained in an effort to improve the health outcomes for this population. Maternal and child health (MCH) training grants to departments of obstetrics/gynecology, pediatrics, and family medicine in historically/predominantly black colleges and universities were first funded in the early 1990s. The funding of these institutions was initiated to serve a dual purpose: (1) the primary intention of these grants is to make possible or enhance the education and training of residents in obstetrics, adolescent gynecology, family practice, and pediatrics for the provision of primary care in community-based settings; and (2) the secondary purpose of these grants is to use the MCH mentorship program to stimulate the interest of African-American and Hispanic high school and college students in MCH-related health professions.

PROGRAM CHARACTERISTICS

This training program has two components: the MCH residency program and the MCH mentorship program. The MCH residency program encourages the development of interdisciplinary programs to enhance the ability of obstetricians, family practitioners, and pediatricians to address primary health care issues. The MCH mentorship program provides high school and college students with course work and clinical experiences to enhance their understanding of the health of children and families.

HIGHLIGHTS

The MCH Residency Program. Residents are exposed to a variety of health care settings and programs to enhance their ability to provide primary care to unserved and underserved populations. These settings and programs include private-practice offices, public health facilities, and community-based programs such as the Healthy Tomorrows Partnership for Children Program and the Community Integrated Service Systems projects. The residency program also encourages the development of interdisciplinary programs to enhance the ability of obstetricians, family practitioners, and pediatricians to address patients' primary health care issues. It also supports activities and mechanisms to recruit residents into MCH scholarship and practice.

The MCH Mentorship Program. This program provides a 6-week session to high school and undergraduate college students, particularly inner-city youth. The students are exposed to a variety of didac-

tic and clinical experiences that are designed to enhance their understanding of the MCH field. These experiences include seminars, observation, and, in some cases, assistance in the provision of services. Upon completion of the program, students submit a personal statement in which they reflect on their experience, as well as a formal paper on a topic related to what they learned during the session.

PROGRAM PROFILE

- In FY 1999, MCHB funded four MCH projects in historically or predominantly black colleges and universities, with annual grant awards totaling about \$686,000.
- The grant awards range from \$163,000 to \$191,000 per year, with a mean award of \$171,000.

Present Grant Recipients

STATE	GRANTEE
DC	Howard University Child Development Center
CA	Charles R. Drew University
GA	Morehouse College
TN	Meharry Medical College

BIBLIOGRAPHY

U.S. Department of Health and Human Services, Health Resources and Services Administration, Maternal and Child Health Bureau. 1996. *Graduate Medical Education in Obstetrics/Gynecology, Pediatrics, and Family Practice in Historically/Predominantly Black Medical Schools: Application Guidance*. Rockville, MD: U.S. Department of Health and Human Services, Health Resources and Services Administration, Maternal and Child Health Bureau.

